

Walsall SEND Service Communications



Walsall Council

AUTUMN 2 2025

WELCOME TO THE WALSALL SEND SERVICE AUTUMN TERM 2 COMMUNICATIONS

These communications are designed for parents and carers of children and young people with Special Educational Needs and Disabilities (SEND). Here, we share important updates, celebrate successes, and highlight opportunities for you to engage with and shape SEND services in Walsall. We are committed to working together to improve support, services, and outcomes for children and young people with SEND. Your voice matters, and we welcome your feedback and involvement.

ARE YOU ON OUR MAILING LIST?



Stay up to date with the latest SEND news, updates, and events in Walsall by joining our mailing list. If you are not already receiving our emails, please contact: localoffer@walsall.gov.uk

OFSTED & CQC LOCAL AREA SEND & AP INSPECTION

We're now approaching the end of the joint Ofsted and Care Quality Commission (CQC) Local Area SEND and AP inspection, which has taken place over the past few weeks. Inspectors have reviewed evidence, visited settings, and spoken with families and partners to understand how we support children and young people with SEND.

Thank you to everyone who contributed, your input has been invaluable. We'll share the official findings once the report is published.



SPAGHETTI TOWERS AND DOUGHNUTS: YOUTH SEND FORUM GETS CREATIVE AT THE CIVIC!

During October half term, the Youth SEND Forum met in person at Walsall Civic Centre for a fun and engaging session. Members explored the venue, connected with each other, and took part in meaningful activities.

The day began with a spaghetti tower challenge, encouraging teamwork and discussions around communication, collaboration, and respect. Parents and carers joined in, adding to the fun!

Afterwards, the group shared their experiences of the forum, what they enjoy, what could improve, and ideas for growth. New members of the group looked at the co-production charter and gave their thoughts. They really liked the layout and the bright colours and felt it reflected their ideas of co-production.

Of course, no meeting is complete without treats, doughnuts and cookies were enjoyed as conversations and friendships flourished.

Thank you to everyone who made the day so positive and productive. We can't wait for our next in-person meeting after Christmas!

For more information or to get involved, contact the [Local Offer Lead](#)





SEN CASEWORK OFFICERS - ANNUAL REVIEW

How We Support Families Through the EHCP Journey

Who Are Our SEN Casework Officers?

In Walsall, we have two SEN Casework Officer teams:

- **New Assessment Officers** – support families during the initial EHCP process
- **Annual Review Officers** – manage ongoing EHCP reviews

If your child has had an Education, Health and Care Plan (EHCP) has been agreed, you'll be supported by one of our Annual Review SEN Casework Officers.

How They Support You

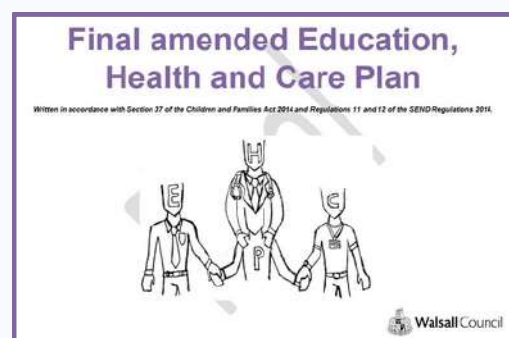
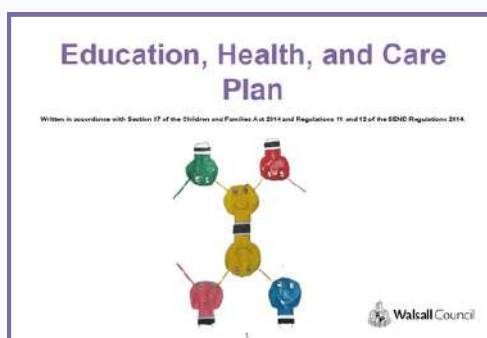
Our Annual Review SEN Casework Officers are here to ensure your child's Education, Health and Care Plan (EHCP) continues to reflect their current needs and aspirations. They work with you, your child, and professionals to keep the plan accurate and up to date.

Our officers are here to:

- Guide you through the annual review process and explain what to expect.
- Listen to your concerns and answer any questions you may have.
- Collect **updated evidence** from schools, settings, and professionals.
- Review progress and identify any changes needed to the EHCP.
- Make sure the plan reflects your child's **current needs, outcomes, and future goals**.
- Keep the process on track and ensure timelines are met.
- Champion your child's voice and potential throughout the review.

Working Together

They're part of Walsall's wider SEND team, working with schools, health, and social care to help achieve the best outcomes for your child.



EMPOWERING PARENTS: FREE SEND WORKSHOPS

Following feedback from our recent survey of parents, carers, and professionals, we've listened to what matters most to you. We're excited to announce two new workshops coming up, designed to empower and support families of children and young people with SEND:

Understanding SEND Support in Schools

- Learn what Ordinarily Available Provision (OAP) means and the support schools should offer all children every day
- Understand how this support comes before a child is placed on SEN Support or starts the Graduated Approach
- Feel more confident talking with your child's teacher or SENCO about the help your child may need.

Date & Time: Thursday 22nd January - 10am - 11:30am

Location: Online - Via MS Teams

Booking Link: <https://forms.office.com/e/KCjxYMRHKY>

Preparing for Adulthood with Your SEND Child/Young Person

- Understand what 'Preparing for Adulthood' (PfA) means for you and your child.
- Learn what you can do now, whatever your child's age, to support their future.
- Explore the key areas that matter: independence, health, education, employment and community life.
- Feel more confident with practical, early planning and making informed decisions together.

Date & Time: Thursday 26th February - 10am - 11:30am

Location: Online - Via MS Teams

Booking Link: <https://forms.office.com/e/FTTHPCCnBz>

WALSALL SENDIASS SUPPORT SURVEY

FACE Walsall PCF is collecting feedback to better understand awareness, experiences and needs across our community.

They are inviting parents, carers, young people and professionals to complete a short survey about the Walsall SENDIAS Service.

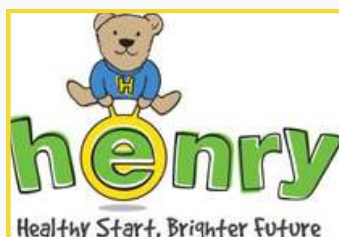
Please use the QR code or link to the right to complete the survey. Thank you



[Walsall SENDIAS Survey](#)

PARENT/CARER SUPPORT

HENRY - Creating a Healthy, Happy Start for Every Child



HENRY programmes and workshops are now available in Walsall, offering free, local support for parents and carers of children aged **0-12** years.



Whether you're looking for ideas to encourage healthy eating, create healthier habits and routines, or better understand your child's behaviour, HENRY is here to help. Group-based programmes and one-off workshops are packed with practical tools and strategies to support your family's health and wellbeing. For more information and how to get in touch, use this link: [HENRY](#)

Neurodiverse Parent Group

Discover Your Unique Community



Supportive Community



Discussions and Awareness



Workshops and Guest speakers

More Info: [MettaMinds](#)



COLLINGWOOD AUTISM SUPPORT GROUP

COLLINGWOOD CENTRE,
COLLINGWOOD DRIVE, GREAT BARR,
BIRMINGHAM, B43 7NF
TEL: 07823 333910/0121 360 1484

Tuesdays 7 – 9pm

More Info: [Collingwood](#)



FACE WALSALL
PARENT CARER FORUM
FAMILIES & CARERS' VOICES

FACE Walsall Parent Carer Forum

Are you supporting a child or young person with special educational needs or a disability aged 0-25?

Want to make a difference? Give us your feedback...Join us and have your voice heard.

What is a Parent Carer Forum?

Our aim is to improve services for children and young people by ensuring that families' voices are heard by planners and decision-makers across Education, Health, and Social Care.

We host events, workshops, and training sessions to empower parents and carers, helping them become a stronger voice for their children and young people.

Placing the views of all parent carers at the centre of decision making

Together we can make a difference for families in Walsall.

For more information contact
Email: Facewalsall@gmail.com
Website: <https://www.facewalsall.com/>



to hear

We want

your views



SEND PARENT PARTNERSHIP GROUP

Are you a parent or carer of a child or young person with Special Educational Needs and/or Disabilities (SEND)?

We want to hear from you!

Join our SEND Parent Partnership Group to share your experiences, provide valuable feedback, and help shape SEND services in Walsall

Why Join?

- **Have your say** - Share your thoughts, ideas, and experiences.
- **Make a difference** - Contribute to improving SEND support and services in Walsall.
- **Connect with others** - Meet with other parents and carers like you!

Together, we can create positive change!

If you're interested in joining, we'd love to hear from you. Please get in touch with Sam:

semantha.house@walsall.gov.uk

 Walsall Council

PARENT/CARER SUPPORT



YOU ARE NOT ALONE - FREE ONLINE PARENT DROP-INS

Parenting an autistic child can feel amazing, confusing, and overwhelming, sometimes all in the same day. That's why we host our **no-cost monthly online drop-in sessions for parents and carers.**

Topics often included:

- Understanding and responding to challenging behaviour
- Making sense of autism on a deeper level
- The ups and downs of family relationships and dynamics
- Working with schools and professionals
- Meeting like-minded parents and realising you are not alone

If you are interested, email sallywagter@gmail.com and we will send them the Zoom link for the December drop-ins.

TOGETHERNESS

Bringing the Solihull Approach to the world



Togetherness pathways - supporting emotional health and wellbeing

Find your journey for stronger relationships and enhanced emotional wellbeing and follow evidence-based educational content developed by clinical psychologists, health practitioners, and psychotherapists. Tried and tested by parents and young people.

Free online learning pathways for all parents, carers, grandparents and teens.

Nurturing emotional health and wellbeing from bump to 19+ years.

Walsall Council are proud sponsors of Togetherness, offering free access to expertly designed online learning pathways for parents, carers, grandparents and teens living in the region.

To access any of these courses for free please visit [Walsall | Togetherness](#)

Enter code **HIPPO** for free access.



PARENT/CARER SUPPORT

WALSALL SENDIASS WORKSHOPS

For more info and book your space contact Walsall

SENDIASS here: [WalsallSENDIASS](#)

Date	Time	Session	Venue
Wednesday 14th January 2026	11am-12:30pm	Workshop 5 - How to make a request for a Parental lead EHCP	Manor Farm Community Centre, Rushall, Walsall, WS41EU (Room 3)
Tuesday 10th February 2026	10am-11:30am	Workshop 6 - Appealing school placement (Section I)	Manor Farm Community Centre, Rushall, Walsall, WS41EU (Room 3)
Thursday 12th March 2026	10am-11:30am	Workshop 7 - How to make a request for a parent lead EHCP	Manor Farm Community Centre, Rushall, Walsall, WS41EU (Room 3)
Monday 20th April 2026	10am-11:30am	Workshop 8 - How to approach a school meeting and any ongoing problems	Manor Farm Community Centre, Rushall, Walsall, WS41EU (Room 3)
Thursday 14th May 2026	11am -12:30pm	Workshop 9 - Refusal to Assess workshop	Manor Farm Community Centre, Rushall, Walsall, WS41EU (Room 3)
Tuesday 9th June 2026	11am-12:30pm	Workshop 10 - Refusal to Issue Workshop	Manor Farm Community Centre, Rushall, Walsall, WS41EU (Room 3)
Tuesday 14th July 2026	10:00-11:30am	Workshop 11 - Surviving the Summer holidays and Activities available	Manor Farm Community Centre, Rushall, Walsall, WS41EU (Room 3)

HEALTH SUPPORT

SUPPORTED WAITING NETWORK DATES

The supported waiting partnership network meetings will be running every month where there will be guest speakers to advise on a variety of monthly topics and many services who support with access to additional support for you and your child.



Walsall Family Hubs
Supporting families to live happier lives

NHS
Walsall Healthcare
NHS Trust

Supported Waiting Parent Network

Is your child on a waiting list to be seen by a paediatric health service?
Come and join us for support while you wait to be seen.

Forthcoming dates for 2026

- January 28th
- February 25th
- March 25th
- April 29th
- May 27th
- June 24th
- July 29th
- August 26th
- September 30th
- October 28th
- November 25th

For further advice or information,
telephone 01922 656463 or
email pals.officer@nhs.net

9.30am-11.30am
Manor Farm Community Association
King George Crescent, Rushall, Walsall, WS4 1EU

Each monthly meeting will be held on the **Last Wednesday of the month** at **Manor Farm Community Association, Rushall, WS4 1EU**

Upcoming Dates:

- Wednesday 28th January
- Wednesday 25th February
- Wednesday 25th March
- Wednesday 29th April

For more information or further advice please call: **01922 656463** or email pals.officer@nhs.net

SPEECH & LANGUAGE THERAPY (SALT) DROP IN

Monday 15th December

9:15-11:30am

Virtual Drop In Session

If you're worried about your child's communication skills and your child is not already known to our service, please come to one of our drop-in sessions for advice and support.

NHS
Black Country
Integrated Care Board



For more info, email the SaLT team: walsall.slt@nhs.net or call: 01922 605400

HCP 0-19 SEND SEND TEAM DROP INS

The HCP 0-19 SEND Team are offering weekly drop-in sessions covering a variety of topics. Toileting, sleep and emotions being just a few.

When: Every Thursday 9:30-11:30am

Where: Child Development Centre, Coalheath Lane, Walsall, WS4 1PL

For more information please contact the single point of access on:

01922 603074

NHS
HCP 0-19 SEND Team

NHS
Black Country
Integrated Care Board



HEALTH SUPPORT

Think pharmacy first for children this winter



Your pharmacist can provide advice and treatment if your child is suffering from a sore throat, earache, sinusitis, impetigo and infected insect bites. Just think pharmacy first.



NHS

- Sore throat (5 and over)
- Sinusitis (12 and over)
- Earache (17 and under)
- Impetigo (1 and over)
- Infected insect bite (1 and over)

**Private consultation
rooms available**

MENTAL HEALTH SUPPORT

kooth

Scan to
get started
or visit:
kooth.com



It can be hard to know what to do when you have something on your mind. That's why Kooth is here. We are totally free and anonymous — and we're here whenever you need us. Go to kooth.com whenever you're worried, feeling low — or just need someone to listen.



Feeling worried?

Text chat with our team. They're here to support you with whatever you're going through. We won't ask for your name or address and you don't need a referral from your doctor.



Feeling alone?

Use our forums and discussion boards to get advice, find people who feel the same — and to help others. You can also share your experiences anytime by submitting a poem or article.



Feeling unsure?

It may help you to write your feelings down, or to set a personal goal. At Kooth, you can set goals and use an online journal whenever you choose.



Feeling lost?

We have a tonne of helpful podcasts, videos and articles on all kinds of topics, from self harm, anxiety and depression to coming out, relationships and self care.



Free
to use



No doctor's
referral
needed



We're a
BACP* accredited
service

Live text chats with
our team from midday
to 10pm on weekdays
and from 6pm to 10pm
at weekends.

Start here
kooth.com: free access to support today.

bacp Accredited
Service

*BACP stands for British Association for Counselling and Psychotherapy. We're an accredited service, and our practitioners are either BACP accredited or working towards it. You're in safe hands.

Free Emotional Wellbeing Support for Young People in Walsall



Private



Anonymous



Secure



Wysa's **AI wellbeing coach** provides a safe, non-judgmental space to talk about anything on your mind. Whether you're struggling with **sleep**, **exam stress**, or just need support, Wysa is here to listen.

Gain full access to **150+ self-help exercises**, from mindfulness and meditation to therapy tools for anxiety and depression.

**Get FREE student
wellbeing support today!**

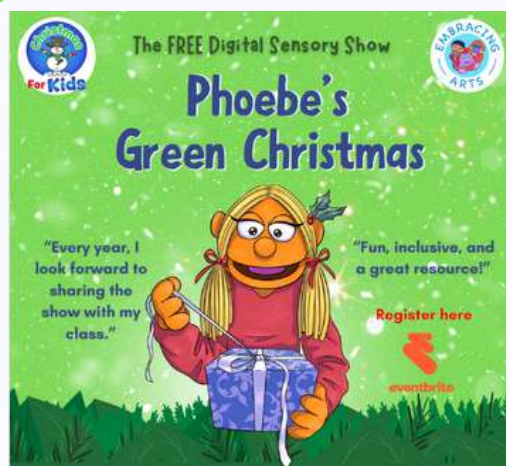
Scan the QR code from your phone OR use the link:
<https://get.wysa.uk/rVzkVH2Lm8b>
If asked for a code, please enter: **BCWA2023**

Please note: Free resources for students can ONLY be accessed via the QR code or link above, not by downloading the Wysa Everyday Mental Health App from the Google Play or App Store. Only accessible via mobile device, not accessible from a desktop device.

Student download



CHILDREN/YOUNG PERSON OPPORTUNITIES



Phoebe's Green Christmas is a **free**, digital festive show created especially for neurodiverse children, those with profound and multiple learning disabilities (PMLD), and children with life-limiting conditions. I

Expect music, puppets, sensory fun, and lots of Christmas cheer! The show is available to watch from **3rd November 2025 to 9th January 2026**.

For more information in how to book a slot please use this link: [EmbracingArts](https://embracingarts.co.uk)



KIC RADIO - AMPLIFYING YOUTH VOICES



KIC Inspire: Empowering Tomorrow's Leaders: Central to our mission is KIC Inspire, a dynamic volunteering and training programme tailored for individuals aged 13 to 25. For more information on how to get involved use this link: [KicRadio](https://kicradio.co.uk)

SHORT BREAKS provide opportunities for children and young people with a disability to spend time away from their families, relax, develop new friendships, take part in new experiences, and have fun doing positive activities. They also give families a break from their caring responsibilities, a chance to rest or spend time with their other children.



The Universal offer can include activities like leisure and sports services, youth and play services, voluntary and community facilities and sports and games clubs

The Targeted offer - School Holiday activities, to access this, children and young people should:

- be aged from 8 to 17 years old (up to their 18th birthday)
- live in Walsall
- have a diagnosed disability and
- be in receipt of disability living allowance (DLA)
- An up-to-date short breaks passport (reviewed and updated within the last 12 months) is required to access the service, to ensure we have the right information for the planning of activities and support for our children and young people

The Short Break booklet and expression of interest online form for the activity schemes for every holiday (excluding Christmas) is available six weeks before each school holiday. For information on how to sign up please email: shortbreaks@walsall.gov.uk

CHILDREN/YOUNG PERSON OPPORTUNITIES

GIRLS YOUTH CLUB

Every Friday from 4:30pm
to 6:30pm at Palfrey Park,
Dale Street, WS1 4AF

Only £1 per
session!

AGE: 8 - 16



For more information
Call: 01922 644006
Email: info@iq-ss.co.uk

YOUTH SEND FORUM

We're looking for amazing young
people in **Year 4 or above** who have
Special Educational Needs (SEND)
to join our **Youth SEND Forum**.

If you enjoy sharing ideas and want to help
improve SEND services, we'd love for you
to get involved!

When & Where?

5:30pm

Online – via Microsoft Teams

What to Expect:

- **Share** your thoughts, ideas, and experiences.
- **Help Improve** SEND support and services in Walsall.
- **Make new friends** with other young people like you!

Get in touch if you'd like to join!

localoffer@walsall.gov.uk



Walsall Council

P.O.P. POSITIVE OUTCOMES PROJECT



SCAN ME

15 - 25

The Positive Outcomes Project (POP) supports 15-25-year-olds in Walsall with challenges such as mental health, employment, finances, and isolation. The service offers mentoring and one-to-one support through referrals, connecting individuals with trained staff for tailored wellbeing support.



Wednesdays
3:30pm - 5:30pm

- Socialising
- Safe Space
- Confidence Building
- Hobbies and Activities

Fridays
11am - 1pm

- CV Writing
- Job Searching
- Interview Preparation
- College and Apprenticeship Support

Electric Palace, Palace Play, Shop, Eat, Blakenall Row, Walsall, WS3 1LW

popwalsall.co.uk



POP Ups

POP Up Sessions
Coming to a Space Near You!

Our mobile, flexible sessions take place wherever young people are – from schools and colleges to youth centres, town centres, community events, and even the Youth Bus.

Tailored to local needs, sessions run weekly or as needed.

Key Focus Areas Include:

- Mental wellbeing
- Life skills & employability
- CV writing & mock interviews
- Loneliness & isolation

Follow us on social media to see where we'll pop up next!

POP Outs

POP Out Sessions
Coming to a Space Near You!

Fun and informal activities led by our POP team in community spaces. Designed to get young people active indoor and outdoors while building confidence in a supportive environment.

Activities might include:

- Community wellbeing walks
- Games like badminton at local leisure centres
- Social group meetups and outdoor gathering

If you'd like to host a session at your venue or have any questions, feel free to get in touch directly!

Mobile Hub

Keep an eye on our social media to find out dates/times and location of the youth bus. If you would like the youth bus at your venue please get in contact with us!



Kumarh@bloxwichcp.co.uk
Haddonb@bloxwichcp.co.uk

FAMILY EVENTS/OPPORTUNITIES



WINTER GLOW SANTA EXPERIENCE & LIGHT TRAIL

The Sensory friendly sessions allow children to visit Father Christmas in a calmer environment with less bookings per time slot, music and lights kept to a lower level, and the elves will be ready to greet the children in a way that suits them.

For more info use this link; [Malvern Winter Glow](#)

SEVERN VALLEY RAILWAY - RELAXED SANTA STEAM TRAIN SPECIALS

A relaxed experience featuring a relaxed Santa stage show with lower volume and lighting on low with reduced capacity. You will have your own space on the train either a table or private compartment, present for each child, sweet treat for each passenger and a free return ticket for each child for the 2026 season.

Use this link for more info: [Severn Valley Railway](#)



TAMWORTH SNOW DOME - SANTA'S WINTER WONDERLAND

Sen sessions offer a relaxed experience with lower sound and lighting levels, fewer people, extra wheel chair spaces and a calm supportive atmosphere. More info: [Snowdome](#)

Winter Crafts

Come along and join in with a range of arts and craft activities at Walsall Family Hubs.

FREE
0-5 YEARS

WEST FAMILY HUB, TUESDAY 16TH DECEMBER 2:30 - 3PM ILLINGTON HOUSE, CRESCENT ROAD, DARLSTON, WS2 8AE	SOUTH AND CENTRAL FAMILY HUB, WEDNESDAY 17TH DECEMBER 2:30 - 3PM BIRCHILLS STREET, WS2 8NF
NORTH FAMILY HUB, WEDNESDAY 17TH DECEMBER 3:30 PM - 5:30 PM BLAKENALL LANE, BLAKENALL, WS3 3LJ	EAST FAMILY HUB, MONDAY 18TH DECEMBER 10:00-11:30AM SILVER COURT, BROWNHILLS, WS6 6HA

Booking required
<https://www.eventbrite.co.uk/e/walsall-family-hubs-7978718523> or scan

Walsall Family Hubs
 Supporting Families in the Community

Funded by UK Government

Darlaston's Community Christmas

20 December
 12-3pm
 King Street, Darlaston

More information to follow soon

To get involved please contact
 Cllr Lucie Nahal: 07519922778

If you'd like to book a stall contact
 Hazel Allan: 07927009618

Organised by the new Darlaston Events Committee

Walsall Arena & Arts Centre present

The WIZARD of OZ
 A WICKED PANTOMIME

Saturday 6 - Sunday 21 December 2025

(Various prices, please check the website for more details)

Enchanted Adventures
 IMMERSIVE EXPERIENCES

CHRISTMAS LIGHT TRAIL

28th November - 29th December

NEW ROUTE - Now in Himley's Walled Garden

Step into a world of festive wonder as you follow our enchanting new light trail through the magical Himley's Walled Garden.

This year's route is completely new and fully flat, making it more accessible than ever for families and visitors of all ages.

- The glowing Christmas Plaza
- The spectacular Fairy Light Tunnel
- The atmospheric Candlelight Plains

BOOK TICKETS NOW AT
www.enchanted-adventures.co.uk

Himley Hall & Park • 5pm - 10pm • Tickets: Perfect families

Sassy Sensory Surprises

INCLUSIVE CHRISTMAS SESSIONS COMING TO WALSHALL!

Join the Sassy Sensory Surprises team this festive season for our inclusive SEND Christmas sessions, kindly funded by Walsall HAF!

Our Sassy sessions are: Inclusive & Accessible, Sensory-Friendly, Full of Festive Fun! Enjoy a range of engaging, sensory-friendly Christmas activities in a relaxed sensory environment with the Sassy team.

Booking can be made through the Walsall HAF portal when it's LIVE!

If you'd like us to book your child onto our sessions, simply send over your child's HAF code, and we'll be happy to support you with the booking process.

fbni@sassysensorysurprises.co.uk
www.sassysensorysurprises.co.uk
 @sassysensorysurprises

Walsall Council

JOIN US FOR

PELSALL CHRISTMAS MARKET & GROTTO

Presented by Pelsall Carnival Committee

SUNDAY 14TH DECEMBER
 10AM - 4PM

Pelsall High Street, WS3 4LX

- Meet Santa
- Stalls
- Entertainment and more!

FURTHER DETAILS TO FOLLOW

Saturday 13th December 2025
 12 noon - 4 pm

Meet Mary & Joseph's Donkey

Come to see the real-life donkey at St James' Church Brownhills

Stroke the Real Donkey, hear the Story of Christmas, make Crafts and enjoy Chicken Nuggets & Chips.

£2.50 per child on entry to cover cost of craft materials and the food.



Merry Christmas

SEND SERVICES FEEDBACK

Please could you spare a few minutes to complete this feedback form on your experience with the SEND Services. Please use the QR code or link below. Your feedback is greatly appreciated.

[SENDSERVICEFeedback](#)



FEEDBACK

If you have any feedback or wish something to be included in the next SEND Communications please do not hesitate to get in touch.

Next Issue: SEND Services Communications Spring 1

Submit your updates by 7th January 26 to be included!

Please use the below emails

Sam: samantha.house@walsall.gov.uk

Local Offer: localoffer@walsall.gov.uk



Thank you for being part of the Walsall SEND community!



Walsall Council

